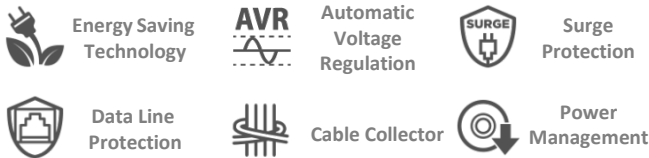


BR700/1000/1200ELCD

BRICs LCD Series

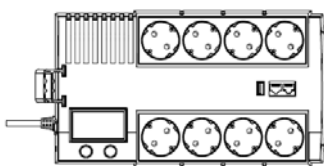
Wall-mountable UPS to Make The Most Of Your Work Space



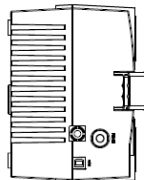
The BRICs LCD UPS Series offers home and small office users clean and stable battery backup while the featured RJ11/RJ45 port ensures phone, fax, and modem lines are protected from surges.

With Automatic Voltage Regulation (AVR) stabilizing the AC signal and maintaining a safe voltage, the UPS maintains safe power levels for the connected equipment without resorting to battery power. The multifunction LCD readout provides immediate access to precise information of critical power and battery condition. For convenient mounting, the Series can be installed in either horizontal or wall-mounted placement to make the most of your space.

The included PowerPanel® Personal Edition management software showcases the feature rich abilities such as input/output power voltage readings, self-diagnostics, and approximate battery backup time. With Energy-saving Technology, the BRICs LCD UPS Series can save up to 75% of electricity to reduce your electricity bill.



Top



Side

APPLICATIONS

- Home and Home Office
- Small Office

SERIES FEATURES

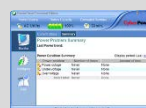
- GreenPower UPS™ Technology
- Automatic Voltage Regulation (AVR)
- EMI, RFI, Surge and Spike Protection
- Phone/Fax/Modem/DSL/Network Protection
- Auto-restart/Auto-charge
- LCD Status Monitor
- USB Connectivity Port
- User-replaceable Batteries
- Horizontal / Wall-mounted Use
- Cable Collector Included
- PowerPanel® Personal Edition Software



ENERGY-SAVING TECHNOLOGY

GreenPower UPS™ Technology

The patented advanced energy-saving technology improves the UPS operating efficiency and eliminates energy consumption and heat buildup.



PowerPanel® Personal Edition Software

System Graceful Shutdown Software

This software can provide orderly shutdown for your computer systems during the event of an extended AC power failure. This software supports Windows 10/8.1/8/7/Vista/XP and Server 2003/2008/2012. Compatible Linux software and Mac instructions are available for download on the website.

*Software functions may vary due to firmware version and/or hardware constraints.



TECHNICAL SPECIFICATIONS

Model Name	BR700ELCD	BR1000ELCD	BR1200ELCD
General			
UPS Topology	Line-interactive	Line-interactive	Line-interactive
Energy Saving	GreenPower UPS™ Bypass Technology	GreenPower UPS™ Bypass Technology	GreenPower UPS™ Bypass Technology
Input			
Nominal Input Voltage	230Vac ± 10%	230Vac ± 10%	230Vac ± 10%
Input Voltage Range	165 - 290Vac	165 - 290Vac	165 - 290Vac
Input Frequency Range	50/60 ± 5Hz (Auto-sensing)	50/60 ± 5Hz (Auto-sensing)	50/60 ± 5Hz (Auto-sensing)
Rated Input Current	3.18A	4.32A	5.45A
Plug Type	Schuko	Schuko	Schuko
Output			
VA/Watts	700/420	1000/600	1200/720
On Battery Waveform	Simulated Sine Wave	Simulated Sine Wave	Simulated Sine Wave
On Battery Voltage	230Vac ± 10%	230Vac ± 10%	230Vac ± 10%
On Battery Frequency	50/60Hz ± 1%	50/60Hz ± 1%	50/60Hz ± 1%
Automatic Voltage Regulation (AVR)	Single Boost, Single Buck	Single Boost, Single Buck	Single Boost, Single Buck
Overload Protection	Circuit Breaker	Circuit Breaker	Circuit Breaker
Outlets - Total	8	8	8
Outlet Type	Schuko x 8	Schuko x 8	Schuko x 8
Outlets - Battery & Surge Protected	4	4	4
Outlets - Surge-only Protected	4	4	4
USB Charging Port	1	1	1
Typical Transfer Time	4ms	4ms	4ms
Battery			
Runtime at Half Load (min)	6	6	9
Runtime at Full Load (min)	1	1	2
Battery Type	Sealed Lead-acid	Sealed Lead-acid	Sealed Lead-acid
Battery Quantity	1	1	2
User-replaceable	Yes	Yes	Yes
Typical Recharge Time	8 Hours	8 Hours	8 Hours
Replacement Battery Pack	RBP0083	RBP0006	RBP0063
Replacement Battery Pack Quantity	1	1	2
Surge Protection & Filtering			
Surge Suppression (Joules)	125	125	125
EMI/RFI Filtration	Yes	Yes	Yes
Phone/Network Protection RJ11/RJ45	1-in, 1-out	1-in, 1-out	1-in, 1-out
Management & Communications			
LCD Panel	Yes	Yes	Yes
HID Compliant USB Port	1	1	1
LED Indicators	Power On	Power On	Power On
Audible Alarms	Battery Mode, Low Battery, Overload, UPS Fault		
Software	PowerPanel® Personal Edition	PowerPanel® Personal Edition	PowerPanel® Personal Edition
Physical			
Form Factor	Brick	Brick	Brick
Physical - UPS Module			
Dimensions (WxHxD) (mm.)	166 x 118 x 288	166 x 118 x 288	166 x 118 x 288
Weight (kg.)	5.3	6.5	8.2
Environmental			
Operating Temperature	32 °F to 104 °F / 0 °C to 40 °C	32 °F to 104 °F / 0 °C to 40 °C	32 °F to 104 °F / 0 °C to 40 °C
Operating Humidity	0% - 90% Non-condensing	0% - 90% Non-condensing	0% - 90% Non-condensing
Operating Elevation	0-10,000 feet (0-3,000 meters)	0-10,000 feet (0-3,000 meters)	0-10,000 feet (0-3,000 meters)
Storage Temperature	- 4 °F to 122 °F / -20 °C to 50 °C	- 4 °F to 122 °F / -20 °C to 50 °C	- 4 °F to 122 °F / -20 °C to 50 °C
Storage Relative Humidity	0% - 90% Non-condensing	0% - 90% Non-condensing	0% - 90% Non-condensing
Online Thermal Dissipation	71 BTU/hr	102 BTU/hr	137 BTU/hr
Certifications			
Certifications	CE	CE	CE, EAC
RoHS Compliant	Yes	Yes	Yes

#All specifications are subject to change without notice. ©2016 Cyber Power Systems, Inc. All Trademarks are the property of their owners.