



CyberPower®

BACKUP UPS
PFC SINEWAVE SERIES



- The Most Affordable Pure Sine Wave UPS Ever
- GreenPower UPS™ Energy-saving Technology
- Multifunction LCD Readout Allows Advanced Configuration
- Two Front Panel USB Charging Ports

APPLICATIONS

- PCs & Workstations
- Printers & Office Devices
- Phone/Fax/Modem
- NAS & Servers
- DVRs/Surveillance Systems
- Computers & Laptops
- SOHO Networking Devices
- Video/Audio Equipment
- Home Theater Systems
- POS Systems

SERIES FEATURES

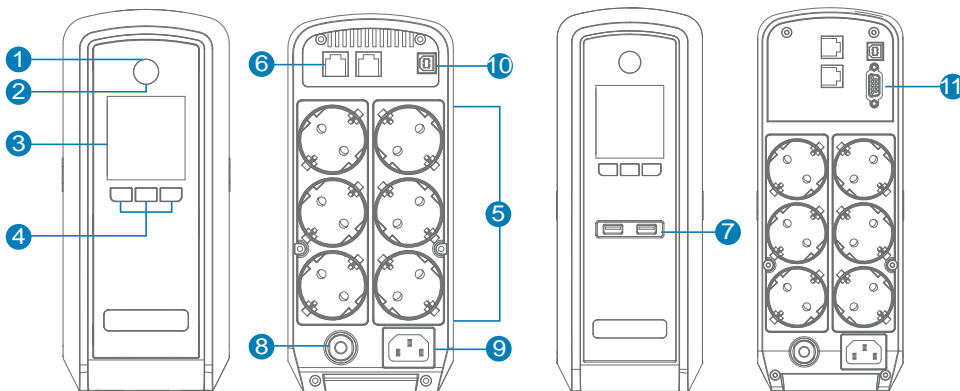
- Line-interactive UPS Topology
- Pure Sine Wave Output
- Automatic Voltage Regulation (AVR)
- GreenPower UPS™ Technology
- Auto-Restart/Auto-Charge
- Fire-Resistance Capability
- Configurable Alarm With Mute Option
- EMI, RFI, Surge and Spike Protection
- Phone/Fax/Modem/DSL/Network Protection
- Tower Form Factor
- User-Replaceable Batteries
- LCD Status Monitor
- Multifunction LCD Readout
- USB Charging Port*
- USB Connectivity Port
- PowerPanel® Personal Edition Software

*Select Model



PRODUCT CALLOUTS

1. Power On Indicator
2. Power On/Off Switch
3. LCD Display Panel
4. Function Buttons
5. Battery Backup & Surge Protected Outlets
6. Communication Protection Ports RJ11/RJ45
7. USB Charging Port
8. Input Circuit Breaker
9. AC Input
10. USB Port
11. Dry Contact



CP900EPFCLCD

CP1300_1500EPFCLCD

TECHNICAL SPECIFICATIONS

Model Name	CP900EPFCLCD	CP1300EPFCLCD	CP1500EPFCLCD
General			
UPS Topology	Line-Interactive	Line-Interactive	Line-Interactive
Energy Saving	Yes	Yes	Yes
Energy Star Qualified	(by request)	(by request)	(by request)
Active PFC Compatible	Yes	Yes	Yes
Input			
Voltage	230Vac	230Vac	230Vac
Input Voltage Range	165Vac - 265Vac	165Vac - 265Vac	165Vac - 265Vac
Input Frequency Range	50/60Hz ± 3Hz (Auto-sensing)	50/60Hz ± 3Hz (Auto-sensing)	50/60Hz ± 3Hz (Auto-sensing)
Rated Input current	10A	10A	10A
Plug Type	Schuko	Schuko	Schuko
Output			
VA	900	1300	1500
Watt.	540	780	900
On Battery Waveform	Pure Sine Wave	Pure Sine Wave	Pure Sine Wave
On Battery Voltage	230Vac ± 10%	230Vac ± 10%	230Vac ± 10%
Automatic Voltage Regulation (AVR)	Single Boost	Single Boost	Single Boost
On Battery Frequency	50/60Hz ±1%	50/60Hz ±1%	50/60Hz ±1%
Outlets - Total	6	6	6
Outlet Type	Schuko	Schuko	Schuko
Outlets - Battery & Surge Protected	6	6	6
Outlets - Surge-Only Protected	0	0	0
Outlets - Battery Backup	-	-	-
Outlets - Extension	-	-	-
Outlets - Widely Spaced	-	-	-
Outlets - Critical Load	-	-	-
Outlets - Non-Critical Load (NCL)	-	-	-
Outlets - ECO Controlled Outlets	-	-	-
USB Charging Ports	-	Yes, Two (2) USB 5V/2.1A	Yes, Two (2) USB 5V/2.1A
Transfer Time	4ms Typical	4ms Typical	4ms Typical
Battery			
Runtime at 60W (min)	7	9	10
Runtime at 90W (min)	1	2	3
Battery Type	Sealed Lead Acid	Sealed Lead Acid	Sealed Lead Acid
Battery Quantity	1	2	2
User Replaceable	Yes	Yes	Yes
Hot-Swappable	-	-	-
Typical Recharge Time	8 Hours	8 Hours	8 Hours
Extended Battery Module	-	-	-
Replacement Battery Pack	RBP0051	RBP0124	RBP0016
Replacement Battery Pack Quantity	1	1	1
Surge Protection & Filtering			
Surge Suppression	405 Joules	405 Joules	405 Joules
Phone Protection RJ11	Yes	Yes	Yes
Phone / Network Protection RJ11/RJ45	1-In, 1-Out (Combo)	1-In, 1-Out (Combo)	1-In, 1-Out (Combo)
Management & Communications			
LCD Control Panel	Yes	Yes	Yes
Detachable LCD Control Panel Option	-	-	-
HID Compliant USB Port	Yes	Yes	Yes
Serial Port	-	-	-
Emergency Power Off (EPO) Port	-	-	-
Dry Contacts	-	Yes	Yes
LED Indicators	Power On	Power On	Power On
Audible Alarms	On Battery, Low Battery, Overload, Fault	On Battery, Low Battery, Overload, Fault	On Battery, Low Battery, Overload, Fault
Software	PowerPanel® Personal Edition	PowerPanel® Personal Edition	PowerPanel® Personal Edition
SNMP / HTTP Remote Monitoring	-	-	-
Physical			
Form Factor	Tower	Tower	Tower
Physical - UPS Module			
Dimensions (WxHxD) (mm.)	100 x 230 x 275	100 x 265 x 370	100 x 265 x 370
Weight (kg.)	6.6	9.9	10.7
Installed Rack Height	-	-	-
Physical - Power Module			
Dimensions (WxHxD) (mm.)	-	-	-
Weight (kg.)	-	-	-
Power Module Rack Height	-	-	-
Physical - Battery Module			
Dimensions (WxHxD) (mm.)	-	-	-
Weight (kg.)	-	-	-
Battery Module Rack Height	-	-	-
Environmental			
Operating Temperature	+ 32°F to 104° F / 0° C to 40° C	+ 32°F to 104° F / 0° C to 40° C	+ 32°F to 104° F / 0° C to 40° C
Operating Humidity	0% - 95% non-condensing	0% - 95% non-condensing	0% - 95% non-condensing
Operating Elevation	0-10000 feet (0-3000 meters)	0-10000 feet (0-3000 meters)	0-10000 feet (0-3000 meters)
Storage Temperature	5 °F to 113°F / -15°C to 45 °C	5 °F to 113°F / -15°C to 45 °C	5 °F to 113°F / -15°C to 45 °C
Storage Relative Humidity	0 - 95%	0 - 95%	0 - 95%
Online Thermal Dissipation	31 BTU/hr	41 BTU/hr	61 BTU/hr

#All specifications are subject to change without notice.

©2016 CyberPower Systems. All Trademarks are the property of their owners.





UPS SYSTEMS | PDUs | SURGE PROTECTORS | POWER INVERTERS